


# Submittal Data

	JOB or CUSTOMER:	
	ENGINEER:	
	CONTRACTOR:	
	SUBMITTED BY:	DATE:
	APPROVED BY:	DATE:
	ORDER NO:	DATE:
	SPECIFICATION REF:	

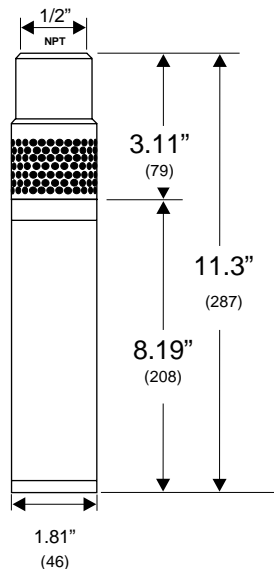
QUANTITY	TAG NO.	MODEL NO.	GPM	FEET	LEAD LENGTH	COMMENTS

## Technical Data

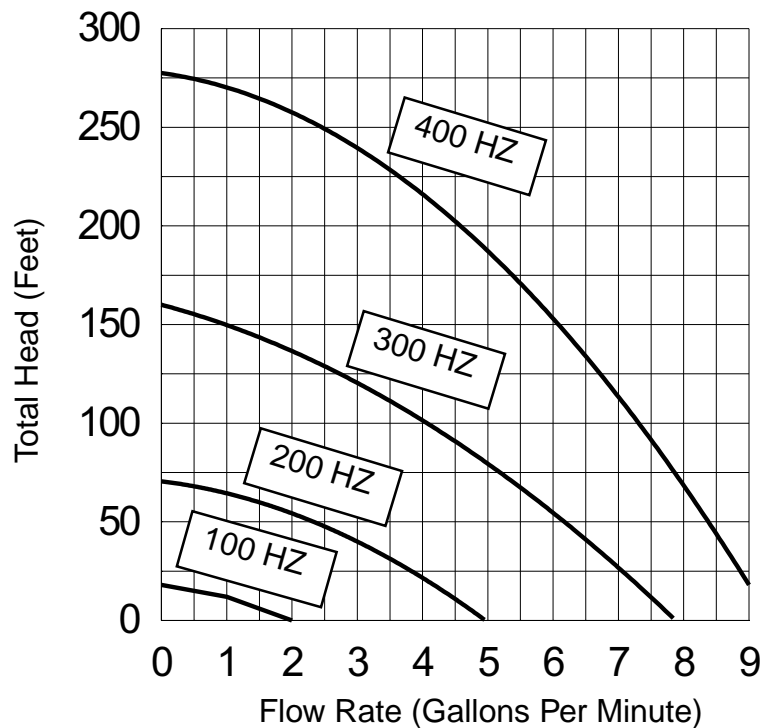
Motor Type: Water-Filled, variable speed submersible Maximum Fluid Temperature: 86. F (30. C) Minimum Fluid Temperature: 34. F (1. C) Maximum Input Power: 1.5 KW (2HP) Maximum Motor Voltage: 3PH X 220 Volts at 400Hz Maximum Motor Current: 5.5 Amps Discharge Size: 1/2 Female NPT Flow Range: Continuous / Variable (100ml/min. - 9 U.S. GPM)	Motor Protection: Thermal Overload Thermik Geratebau, Series SY6 Disconnect Temperature: 176. F (80. C) Rate Current: 5 Amps Current Overload: Incorporated into MP1 Converter
---	--

Installation: Unit to be installed vertically for submerged operation.  
 Standard Lead Lengths: 50, 75, 100, 150, 175, 200, 250, and 300 Ft.  
 Custom Lengths: 25-300 feet in 1 foot increments.

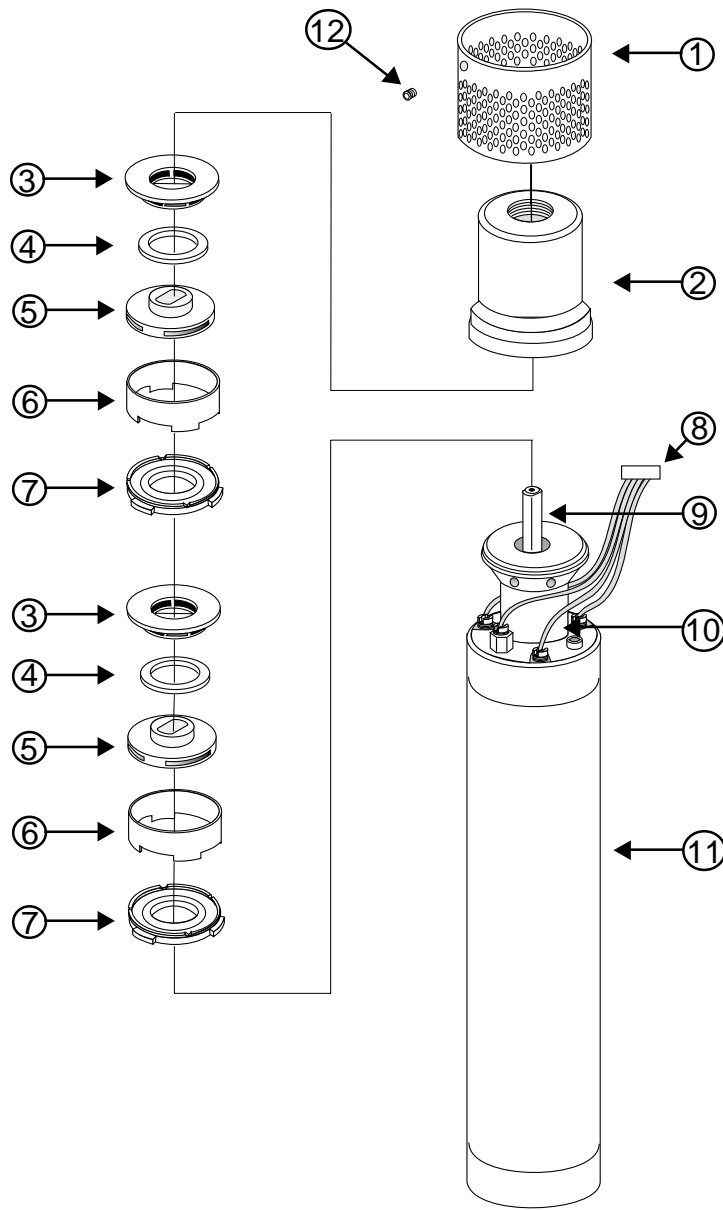
### Dimensions (inches/mm)



Net Weight: 5.5LBS.  
 (Not including motor lead)



# MP-1 Materials of Construction



Position Number	Description	Material
1	Inlet Screen	316 Stainless Steel
2	Pump Housing	316 Stainless Steel
3	Guide Vane	316 Stainless Steel
4	Wear Ring	Teflon <sup>®</sup>
5	Impeller	316 Stainless Steel
6	Spacer Ring	316 Stainless Steel
7	Wear Plate	Teflon <sup>®</sup>
8	Motor Lead	Teflon <sup>®</sup>
9	Shaft	329 Stainless Steel
10	Suction Interconnector	316 Stainless Steel
11	Stator Housing	316 Stainless Steel
12	Allen Screw	18-8 Stainless Steel

Specifications subject to change w/o notice

Teflon<sup>®</sup> is a registered trademark of Du Pont



*Leaders in Pump Technology*

Grundfos Pumps Corporation • 3131 N. Business Park Avenue • Fresno, CA 93727  
 Customer Service Centers: Allentown, PA • Fresno, CA  
 Phone: (800) 333-1366 • Fax: (800) 333-1363  
 Canada: Oakville, Ontario • Mexico: Apodaca, N.L.



Visit our website at [www.us.grundfos.com](http://www.us.grundfos.com)

L-RF-TL-012	09/00
PRINTED IN USA	