



Use the Wireless TROLL Com to connect an In-Situ instrument to a Bluetooth-enabled mobile device and the VuSitu mobile app. The Wireless TROLL Com doesn't have internal data storage. It allows data transfer between an instrument and VuSitu (or Win-Situ 5 via a USB cable).

1 USB connection

Plug your Wireless TROLL Com into a PC for charging or setup.

2 Dust cover for USB connection

6 Connection status indicator



Flashing red = The Wireless TROLL Com, instrument, and Bluetooth-enabled device are not connected.



Continuous red = The Wireless TROLL Com is connected to an instrument, but not connected to a Bluetooth-enabled mobile device.



Flashing green = The Wireless TROLL Com is connected to the Bluetooth-enabled device, but is not connected to an instrument.

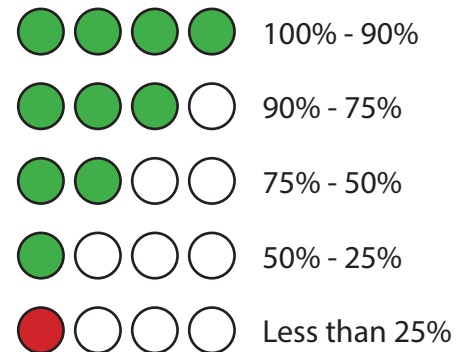


Continuous green = The Wireless TROLL Com, instrument, and Bluetooth-enabled device are connected.

3 On/Off button

Press the button once to turn the device on or off.

4 Battery charge status indicator



5 Cable connector

Attach an instrument to the Wireless TROLL Com with a Rugged Cable *before* connecting to VuSitu. When switching instruments, you may need to turn the Wireless TROLL Com off and on again.

Wireless Rugged TROLL Com

Charging the Wireless TROLL Com



Open the dust cover at the top of the Wireless TROLL Com.



Connect the USB cable to the device.



Plug the USB cable into the wall charger or a powered USB port from a computer. Make sure the computer is plugged in.



The device lights will turn on and blink according to charge level.



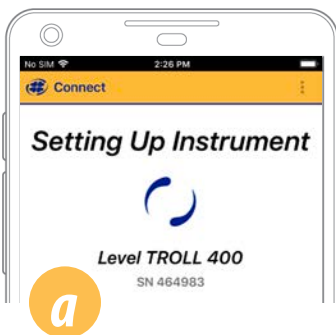
A fully-charged communication device will run for up to 40-50 continuous hours. Avoid full discharges and charge the battery each use. Do not store the Wireless TROLL Com in temperatures above 122 F/50 C.

Connecting to VuSitu with a Wireless TROLL Com

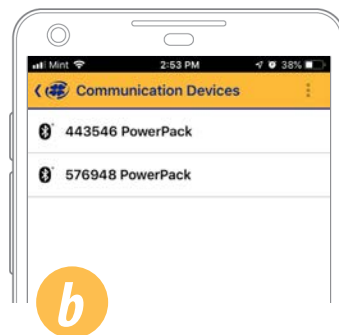


You must have the VuSitu mobile app to use the instrument with a mobile device. Download VuSitu from the Google Play Store or the Apple App Store.

iOS

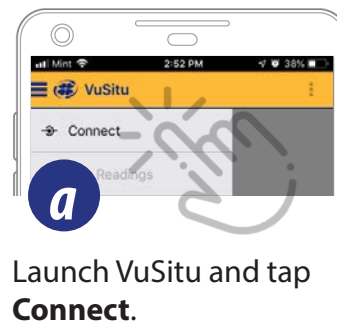


An iOS device automatically connects to the closest In-Situ instrument.

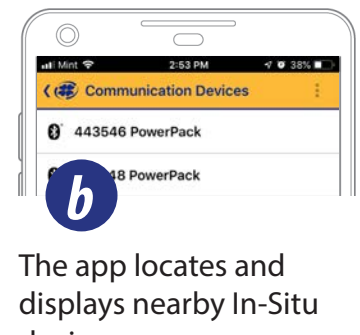


To connect to another instrument, press **Disconnect** and then **Choose or Add Device**. VuSitu displays a list of available connections.

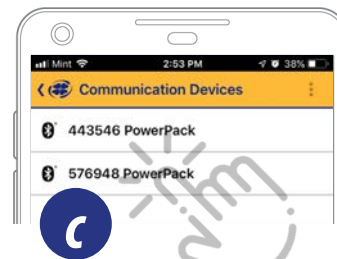
Android



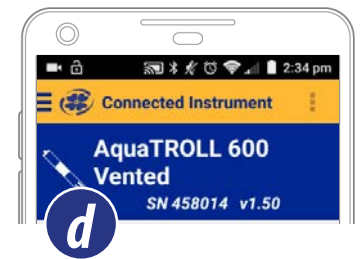
Launch VuSitu and tap **Connect**.



The app locates and displays nearby In-Situ devices.



Tap the serial number of the instrument or Wireless TROLL Com.



VuSitu displays the Connected Instrument screen when pairing is complete.

Connecting to Win-Situ 5



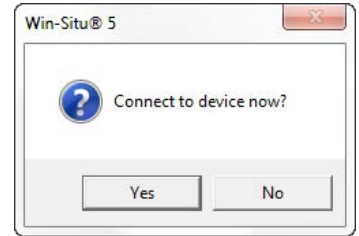
Attach an instrument to the Wireless TROLL Com with a Rugged Cable.



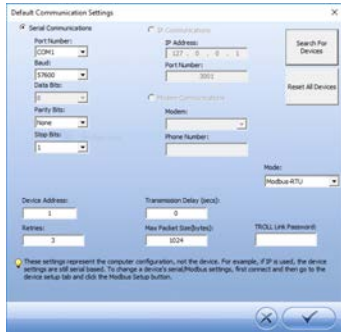
Connect the USB cable to the port at the top of the Wireless TROLL Com.



Plug the other end of the cable into your PC's USB port.



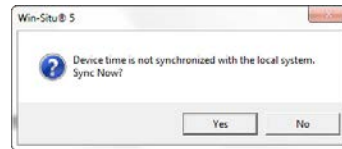
Open Win-Situ. Select No when asked "Connect to device now?"



Choose Preferences > Com Settings from menu bar. Select Serial Communications radio button and then choose the correct Com Port. Click check mark button.



Click yellow connect button at bottom right of screen.



Click **Yes** if prompted to sync device time with local system, or if prompted to update firmware.

Default communication settings



The following default communication settings are most common for In-Situ instruments:

- Baud: 19200
- Data bits: 8
- Parity bits: Even
- Stop Bits: 1
- Device Address: 1
- Mode: Modbus-RTU

Rebooting the Wireless TROLL Com



Follow the steps below if your Wireless TROLL Com doesn't respond while connected to a computer.



Disconnect the Wireless TROLL Com from a power/charging source.



Turn on the Wireless TROLL Com.



Hold the Power button down until the bottom LEDs flash back and forth and then turn off.



Turn the Wireless TROLL Com back on and attempt to use.

Specifications

Operating temperature	-5 to 50° C (23 to 122° F); 95% relative humidity, non-condensing
Storage temperature	-20 to 50° C (-4 to 122° F); 95% relative humidity, non-condensing
Dimensions	16 x 4.3 x 3 cm (6.3 x 1.7 x 1.2 in.)
Weight	165 g (0.36 lb)
Materials	PC / ABS blend, Silicon, Urethane, Stainless steel, Brass, Santoprene, Poron®, Polyethylene, Versapor®, Titanium, PEEK, Viton®
Environmental rating	IP67
Output options	Bluetooth®, USB
Communication protocol	Android®: SPP Windows®: SPP or USB
Battery type	3.6 V 2.9AH Lithium rechargeable cell (UBBL39-FL)
Charging requirements	5 VDC USB charger (1 A or 500 mA)
Warranty	1 year
Certifications	CE, FCC (SSSBC127-X), WEEE

Sensor	Temperature	Barometric pressure
Accuracy	±2° C max	±3 mbar max
Range	-20 to 70° C (-4 to 158° F)	300 to 1100 mbar
Resolution	0.1° C	0.01 mbar
Sensor type	Fixed	Fixed
Response time	< 30 seconds	Instantaneous in thermal equilibrium
Units of measure	Celsius or Fahrenheit	psi, kPa, bar, mbar, mmHg, inHg, Torr, atm
Method	EPA 170.1	Piezoresistive

Safety



Read the safety information on this page before using your Wireless TROLL Com. If you have questions, contact In-Situ Technical Support for assistance.

- Do not use the Wireless TROLL Com in any manner not specified by the manufacturer.
- Do not submerge the Wireless TROLL Com or your mobile device in liquid.
- Do not use the Wireless TROLL Com in temperatures beyond those specified in this document.